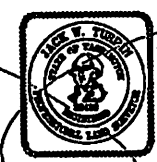


**BASIS OF BEARING**  
WEST LINE OF SECTION 10 PER RECORD OF SURVEY REFERENCED.

**SURVEY REFERENCES**  
RECORD OF SURVEY REFERENCED UNDER AP#20070265010

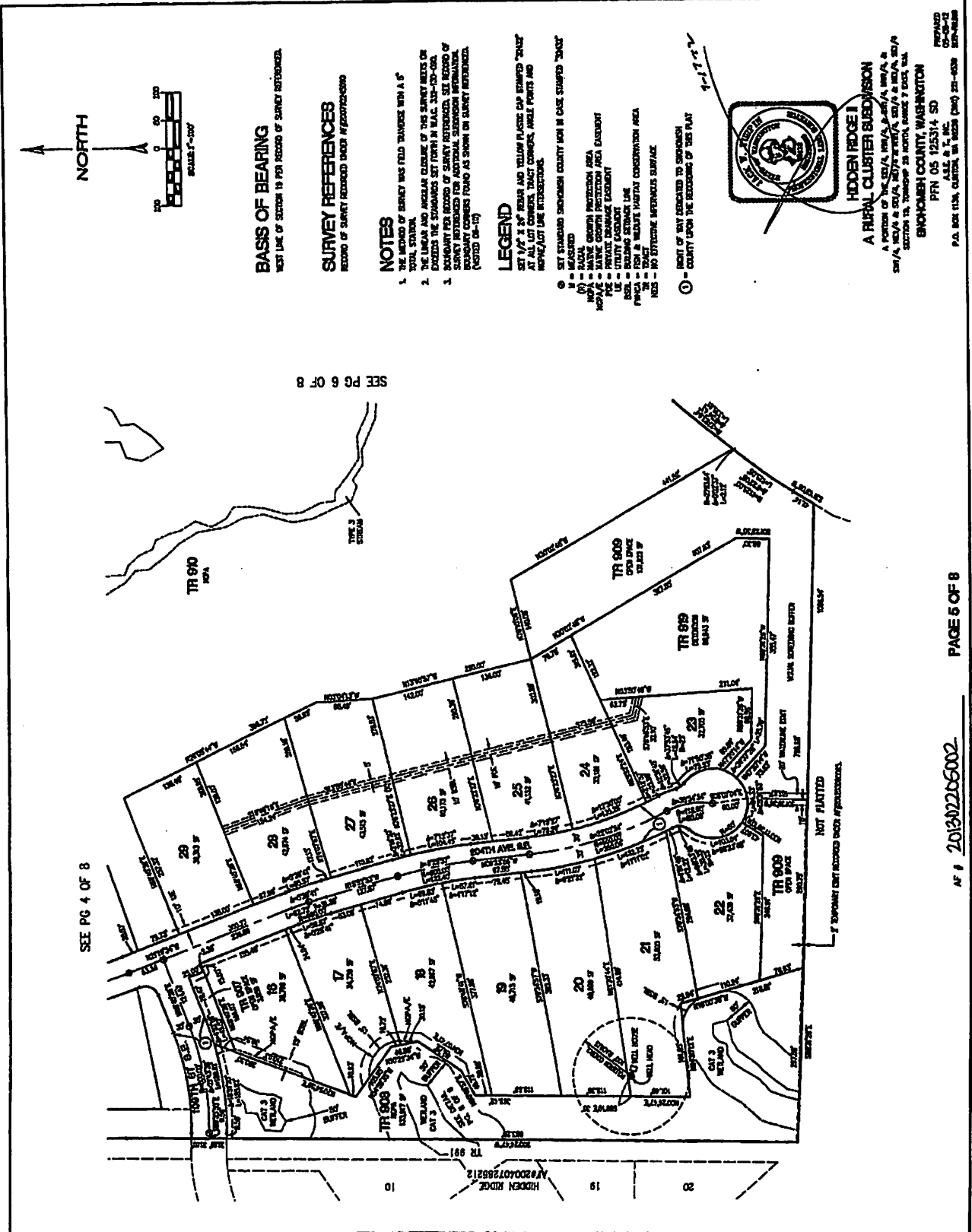
- NOTES**
1. THE METHOD OF SURVEY WAS FIELD TRANSIRE WITH A 5" TOTAL STATION.
  2. THE LINEAR AND ANGULAR CLOSURE OF THIS SURVEY MEETS OR EXCEEDS THE STANDARDS SET FORTH IN W.A.C. 332-130-020.
  3. BOUNDARY PER RECORD OF SURVEY REFERENCED. SEE RECORD OF SURVEY REFERENCED FOR ADDITIONAL SUBDIVISION INFORMATION, BOUNDARY CORNERS FOUND AS SHOWN ON SURVEY REFERENCED. (WSTD 08-10)

- LEGEND**
- SET 1/2" X 3/8" HELIX AND YELLOW PLASTIC CAP STAMPED "EAL" AT ALL LOT CORNERS, TRACT CORNERS, ANGLE POINTS AND NPGA/LOT LINE INTERSECTIONS.
- ⊙ SET STANDARD SNOHOMISH COUNTY MON IN CASE STAMPED "EAL"
  - ⊕ MEASURED
  - (R) BENCH
  - NPGA NATIVE GROWTH PROTECTION AREA
  - NPGA/E NATIVE GROWTH PROTECTION AREA EASEMENT
  - PDE PRIVATE DRAINAGE EASEMENT
  - UE UTILITY EASEMENT
  - BSL BUILDING SETBACK LINE
  - FWCA FISH & WILDLIFE HABITAT CONSERVATION AREA
  - TR TRACT
  - MS NO EFFECTIVE IMPROVED SURFACE
- ① RIGHT OF WAY DEDICATED TO SNOHOMISH COUNTY UPON THE RECORDING OF THIS PLAT



**HIDDEN RIDGE**  
**A RURAL CLUSTER SUBDIVISION**  
A PORTION OF THE S1/4, N1/4, & SW1/4, NW1/4 & SW1/4, NE1/4 & SE1/4, NE1/4 & NW1/4, S21/4 & NE1/4, S1/4 SECTION 10, TOWNSHIP 28 NORTH, RANGE 7 EAST, W.M.  
**SNOHOMISH COUNTY, WASHINGTON**  
PFN 05 125314 SD  
A.E.L. & T., INC.  
P.O. BOX 1138, CLINTON, WA 98293 (360) 221-0538  
PREPARED 11-19-12  
RTP-PLM





SEE PG 4 OF 8

SEE PG 6 OF 8



**BASIS OF BEARING**  
 WEST LINE OF SECTION 18 FOR RECORD OF SURVEY REFERENCED.

**SURVEY REFERENCES**  
 RECORD OF SURVEY REFERENCED UNDER #P200407298212

**NOTES**  
 1. THE METHOD OF SURVEY WAS FIELD TRANGERS WITH A S' TOTAL STATION.  
 2. THE LINEAR AND ANGULAR CLATURE OF THIS SURVEY MEETS OR EXCEEDS THE STANDARDS SET FORTH IN N.E.C. 333-350-02A.  
 3. DOCUMENTARY PER RECORD OF SURVEY REFERENCED, SEE RECORD OF SURVEY REFERENCED FOR ADDITIONAL SUBDIVISION INFORMATION. BOUNDARY CORNERS FOUND AS SHOWN ON SURVEY REFERENCED. (LISTED 04-14)

**LEGEND**

- ① SET STAMPOUS SPOONSHOWN COUNTY MON IN CASE STAMPOUS "JANET" SET 1/2" X 3/4" BEAR AND YELLOW PLASTE CAP STAMPOUS "JANET" AT ALL LOT CORNERS, TRACT CORNERS, ANGLE POINTS AND MONUMENT LOT LINE INTERSECTIONS.
- ② SET STAMPOUS SPOONSHOWN COUNTY MON IN CASE STAMPOUS "JANET"
- ③ MEASURED
- ④ RAVAL
- ⑤ MARKING CORNERS PROVISION AREA
- ⑥ MARKING CORNERS PROVISION AREA
- ⑦ PRIVATE DRAINAGE FACILITY
- ⑧ PRIVATE DRAINAGE FACILITY
- ⑨ UTILITY FACILITY
- ⑩ UTILITY FACILITY
- ⑪ BUILDING EXTERIOR LINE
- ⑫ ROAD OR DRIVE EXTERIOR LINE
- ⑬ ROAD OR DRIVE EXTERIOR LINE
- ⑭ ROAD OR DRIVE EXTERIOR LINE
- ⑮ ROAD OR DRIVE EXTERIOR LINE
- ⑯ NO EXTERIOR METRIC/SURFACE

① RIGHT OF WAY DEDICATED TO SPOONSHOWN COUNTY UPON THE RECORDING OF THIS PLAT



**HIDDEN RIDGE I**  
**A RURAL CLUSTER SUBDIVISION**  
 A PORTION OF THE SE1/4, SW1/4, SW2/4, SW3/4, SW4/4, SW5/4, SW6/4, SW7/4, SW8/4, SW9/4, SW10/4, SW11/4, SW12/4, SW13/4, SW14/4, SW15/4, SW16/4, SW17/4, SW18/4, SW19/4, SW20/4, SW21/4, SW22/4, SW23/4, SW24/4, SW25/4, SW26/4, SW27/4, SW28/4, SW29/4, SW30/4, SW31/4, SW32/4, SW33/4, SW34/4, SW35/4, SW36/4, SW37/4, SW38/4, SW39/4, SW40/4, SW41/4, SW42/4, SW43/4, SW44/4, SW45/4, SW46/4, SW47/4, SW48/4, SW49/4, SW50/4, SW51/4, SW52/4, SW53/4, SW54/4, SW55/4, SW56/4, SW57/4, SW58/4, SW59/4, SW60/4, SW61/4, SW62/4, SW63/4, SW64/4, SW65/4, SW66/4, SW67/4, SW68/4, SW69/4, SW70/4, SW71/4, SW72/4, SW73/4, SW74/4, SW75/4, SW76/4, SW77/4, SW78/4, SW79/4, SW80/4, SW81/4, SW82/4, SW83/4, SW84/4, SW85/4, SW86/4, SW87/4, SW88/4, SW89/4, SW90/4, SW91/4, SW92/4, SW93/4, SW94/4, SW95/4, SW96/4, SW97/4, SW98/4, SW99/4, SW100/4

PREPARED  
 09-08-11  
 A.L.S. & T., INC.  
 P.O. BOX 1104, COLUMBIA, WA 98506 (509) 225-0228

PLANNED  
81-05-13  
P.O. BOX 1504, CANTON, MN 55003 (507) 221-6533

**HIDDEN ROUGE II - PHASE 2**  
A RURAL CLUSTER SUBDIVISION  
A PORTION OF THE SE 1/4, NW 1/4, & SW 1/4, SD 1, &  
NW 1/4, NE 1/4, & NW 1/4, SE 1/4, & NW 1/4, SD 1,  
SNOBUSH COUNTY, WASHINGTON  
PFN 05 125314 SD



PAGE 3 OF 4

**LEGEND**

1. BOUNDARY FOR RECORDED PLAT OF HIDDEN ROUGE I.  
2. THE LINES AND ANGLES SET FORTH IN W.A.C. 125-120-020.  
3. THE METHOD OF SURVEY WAS FIELD TRAVERSE WITH A 5' TOTAL STATION.

**NOTES**

1. THE METHOD OF SURVEY WAS FIELD TRAVERSE WITH A 5' TOTAL STATION.  
2. THE LINES AND ANGLES SET FORTH IN W.A.C. 125-120-020.  
3. THE METHOD OF SURVEY WAS FIELD TRAVERSE WITH A 5' TOTAL STATION.

**SURVEY REFERENCES**

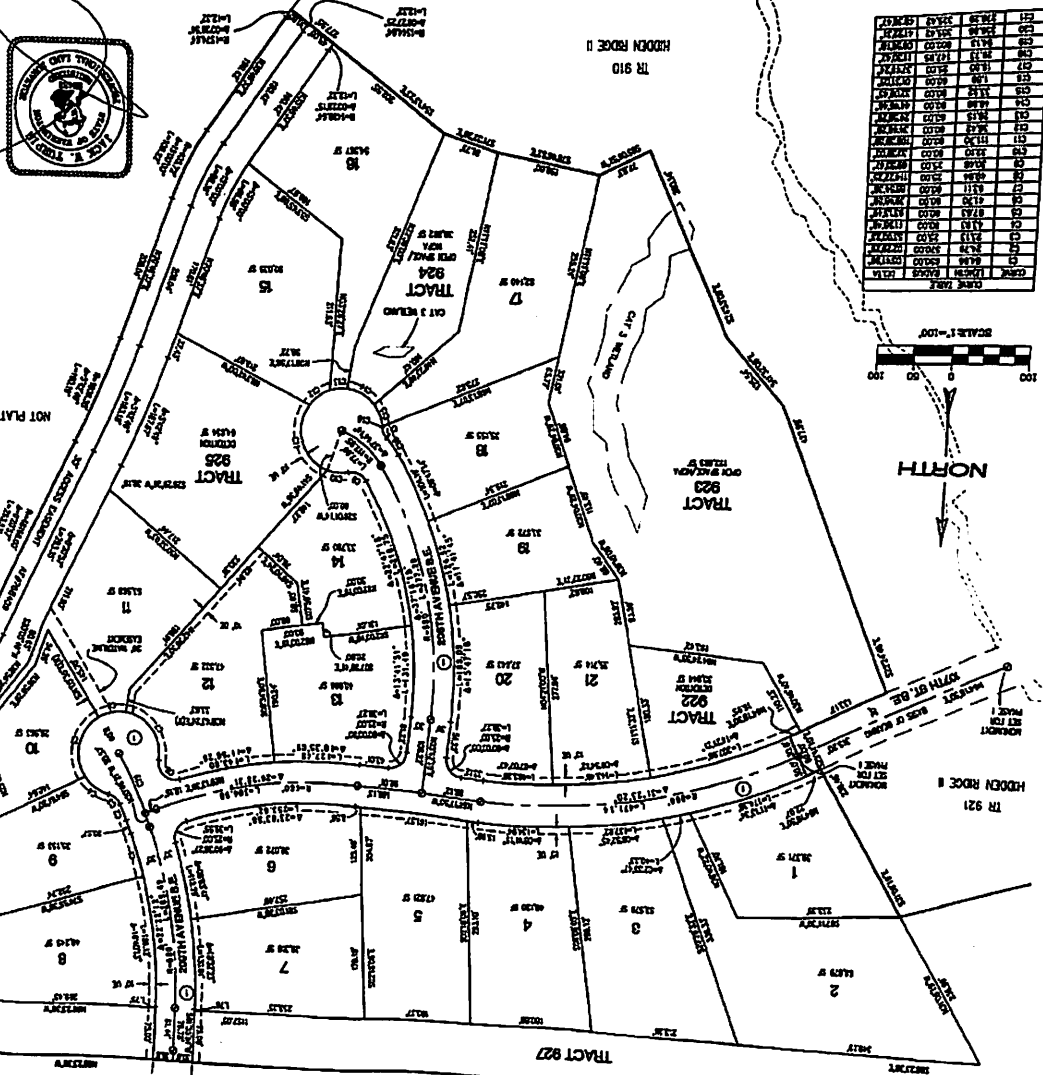
1. THE METHOD OF SURVEY WAS FIELD TRAVERSE WITH A 5' TOTAL STATION.

**BASIS OF BEARING**

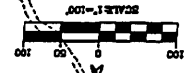
1. THE METHOD OF SURVEY WAS FIELD TRAVERSE WITH A 5' TOTAL STATION.

**NOT PLATTED**

TRACT 926  
TRACT 927  
TRACT 928



TRACT	ACRES	SECTION	TOWNSHIP	RANGE	COUNTY	STATE
924	1.00	36	12N	23E	SN	WA
925	1.00	36	12N	23E	SN	WA
926	1.00	36	12N	23E	SN	WA
927	1.00	36	12N	23E	SN	WA
928	1.00	36	12N	23E	SN	WA
929	1.00	36	12N	23E	SN	WA
930	1.00	36	12N	23E	SN	WA
931	1.00	36	12N	23E	SN	WA
932	1.00	36	12N	23E	SN	WA
933	1.00	36	12N	23E	SN	WA
934	1.00	36	12N	23E	SN	WA
935	1.00	36	12N	23E	SN	WA
936	1.00	36	12N	23E	SN	WA
937	1.00	36	12N	23E	SN	WA
938	1.00	36	12N	23E	SN	WA
939	1.00	36	12N	23E	SN	WA
940	1.00	36	12N	23E	SN	WA
941	1.00	36	12N	23E	SN	WA
942	1.00	36	12N	23E	SN	WA
943	1.00	36	12N	23E	SN	WA
944	1.00	36	12N	23E	SN	WA
945	1.00	36	12N	23E	SN	WA
946	1.00	36	12N	23E	SN	WA
947	1.00	36	12N	23E	SN	WA
948	1.00	36	12N	23E	SN	WA
949	1.00	36	12N	23E	SN	WA
950	1.00	36	12N	23E	SN	WA
951	1.00	36	12N	23E	SN	WA
952	1.00	36	12N	23E	SN	WA
953	1.00	36	12N	23E	SN	WA
954	1.00	36	12N	23E	SN	WA
955	1.00	36	12N	23E	SN	WA
956	1.00	36	12N	23E	SN	WA
957	1.00	36	12N	23E	SN	WA
958	1.00	36	12N	23E	SN	WA
959	1.00	36	12N	23E	SN	WA
960	1.00	36	12N	23E	SN	WA
961	1.00	36	12N	23E	SN	WA
962	1.00	36	12N	23E	SN	WA
963	1.00	36	12N	23E	SN	WA
964	1.00	36	12N	23E	SN	WA
965	1.00	36	12N	23E	SN	WA
966	1.00	36	12N	23E	SN	WA
967	1.00	36	12N	23E	SN	WA
968	1.00	36	12N	23E	SN	WA
969	1.00	36	12N	23E	SN	WA
970	1.00	36	12N	23E	SN	WA
971	1.00	36	12N	23E	SN	WA
972	1.00	36	12N	23E	SN	WA
973	1.00	36	12N	23E	SN	WA
974	1.00	36	12N	23E	SN	WA
975	1.00	36	12N	23E	SN	WA
976	1.00	36	12N	23E	SN	WA
977	1.00	36	12N	23E	SN	WA
978	1.00	36	12N	23E	SN	WA
979	1.00	36	12N	23E	SN	WA
980	1.00	36	12N	23E	SN	WA
981	1.00	36	12N	23E	SN	WA
982	1.00	36	12N	23E	SN	WA
983	1.00	36	12N	23E	SN	WA
984	1.00	36	12N	23E	SN	WA
985	1.00	36	12N	23E	SN	WA
986	1.00	36	12N	23E	SN	WA
987	1.00	36	12N	23E	SN	WA
988	1.00	36	12N	23E	SN	WA
989	1.00	36	12N	23E	SN	WA
990	1.00	36	12N	23E	SN	WA
991	1.00	36	12N	23E	SN	WA
992	1.00	36	12N	23E	SN	WA
993	1.00	36	12N	23E	SN	WA
994	1.00	36	12N	23E	SN	WA
995	1.00	36	12N	23E	SN	WA
996	1.00	36	12N	23E	SN	WA
997	1.00	36	12N	23E	SN	WA
998	1.00	36	12N	23E	SN	WA
999	1.00	36	12N	23E	SN	WA
1000	1.00	36	12N	23E	SN	WA



NORTH

SEE PG 4 OF 4

WEATHERBY  
AF 1004026312